

2-1/2" 25ga ClarkDietrich Shaftwall System

ClarkDietrich CT Cavity Shaftwall System

ClarkDietrich CT Cavity Shaftwall Studs are high-performance members engineered to maintain shaftwall integrity. CT Studs are designed for use with 1" thick gypsum 24" wide liner panels. Gypsum liner panels are inserted into the "T" portion of the stud and are friction fit. The system is finished with fire rated gypsum board to complete and achieve the designated fire rating.

ClarkDietrich J-Tabbed Track is used at the floor and ceiling in shaftwall assemblies. CT studs and gypsum shaftliner panels are friction fit between the top and bottom J-Tabbed Track. J-Tabbed Tracks have unequal legs. The longer leg (available in 2-1/4" and 3") is installed on the shaft side providing a backstop for easy installation of the liner panel. Three-inch leg track is typically used as jamb struts around closure details, including duct and door openings, abutments and intersections.

Product Material Thickness:

Member	Minimum thickness			Design thickness
	(mils)	gauge	(in.)	(in.)
CT Stud and J-Tabbed Track / J-Runner	22	25	0.0219	0.0231

CT Stud Structural Properties:

Member	Product code	Weight (lb / ft)	Area (in ²)	I _x (in ⁴)	S _x (in ³)	Pcs./Skids
2-1/2" CT Stud 25ga (22mils)	CTN2	0.514	0.165	0.164	0.114	210

ASTM & Code Standards:

- Shaftwall products are produced to meet or exceed ASTM C645 and A1003
- UL Design No. U417, U428, U429, U497, U498 and V455
- PEI Assembly Evaluation Report AER-12061
- MSDS & Product Certification Information available at www.clarkdietrich.com

Limiting Heights:

Deflection	Design Pressure (psf)			
	5	7.5	10	15
L/120	16'-10"	13'-8"	11'-10"	8'-6"
L/240	11'-10"	9'-10"	8'-8"	7'-3"
L/360	9'-10"	8'-3"	7'-3"	6'-2"

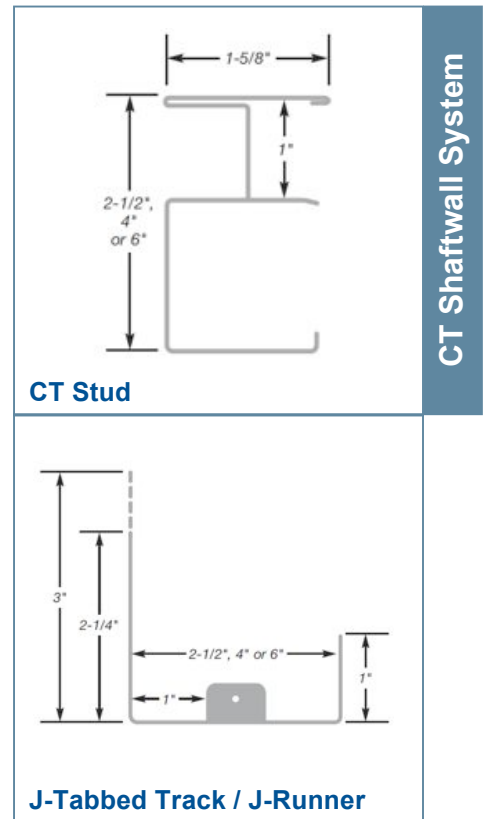
See limiting heights table notes in PEI AER-12061 report or on www.clarkdietrich.com/shaftwall

GREEN Benefits and Recycled Content:

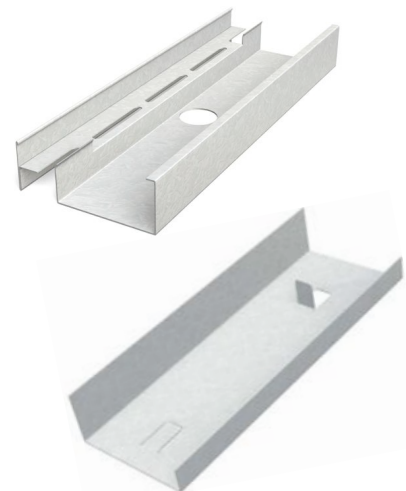
LEED Credit MR 2 - ClarkDietrich products are manufactured from cold-formed steel. Steel is 100% recyclable, which helps divert debris from the waste stream. The contribution to LEED must be calculated by the contractor based on weight or volume.

LEED Credit MR 4 - ClarkDietrich's steel products have a minimum recycled content of 34.9%, of which 24.3% is post-consumer, and 9.4% is pre-consumer. To report a higher number for your project or seek Credit MR 5, contact Technical Services at 888-437-3244 or visit www.clarkdietrich.com.

09.22.16 (Non-Structural Metal Framing)



CT Shaftwall System



Project Information

Name: cavobuilderssupplies.com
Address:

Contractor Information

Name:
Contact:
Phone:
Fax:

Architect Information

Name:
Contact:
Phone:
Fax: